

Solutions

The tasks involved in rehabilitating underground structures are extensive and require suitable system solutions (material and technology).

WEBAC offers an extensive product range for special applications in civil engineering and sewer construction.



Especially for work in confined and poorly accessible areas, our cartridge systems have proven their worth.

The **WEBAC QuickSet** offers a suitable material selection for the respective rehabilitation case.



Further information

In the **download area** on webac-grouts.com you will find the technical data sheets of our products.



Profit from our long-standing experience and WEBAC quality products for your success.

Do you have any questions? Please contact us!
Tel. +49 40 67057-0

WEBAC®

Our Formula – Your Solution

WEBAC-Chemie GmbH
Fahrenberg 22
22885 Barsbuettel/Hamburg
Germany

Tel. +49 40 67057-0
Fax +49 40 6703227
info@webac.de
webac-grouts.com

WEBAC®

Underground Infrastructure

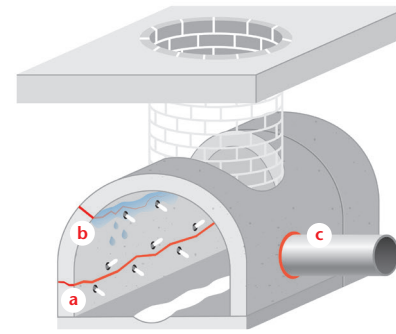
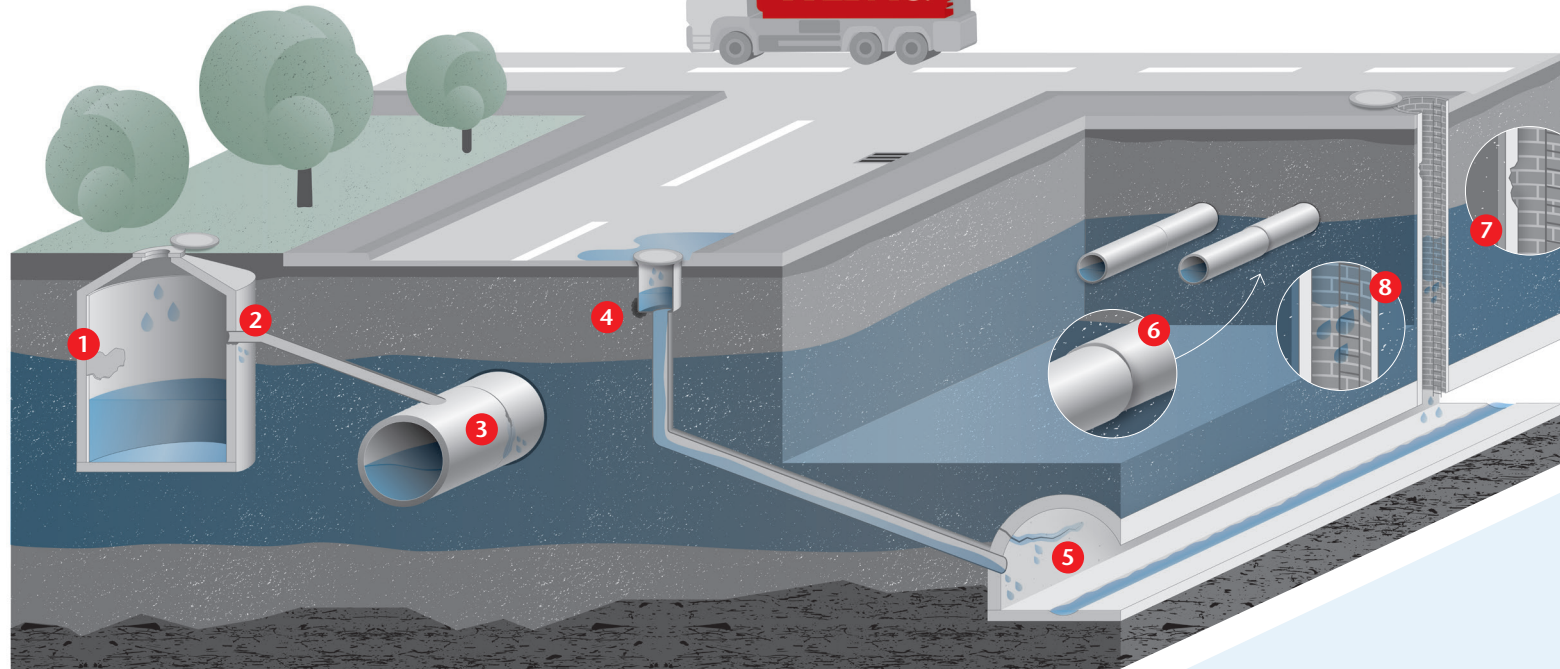
Rehabilitation of sewers and shafts



The ravages of time ...

... leave their traces at the underground infrastructure just as much as increasing load caused by static, chemical, biological, mechanical and dynamic stress. Over time, these lead to damage that must be remediated quickly and in a targeted manner.

This flyer provides an initial overview of possible damage and the corresponding rehabilitation measures.



INJECTION/SEALING

- a** Crack injection in concrete and masonry
- b** Injection of leaks and in case of ingress of water
- c** Sealing of pipe ducts

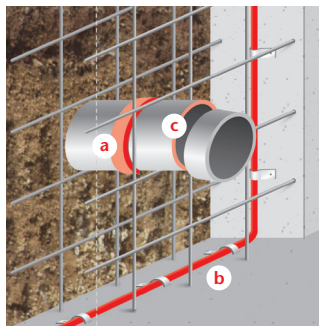
WEBAC Injection Resins

POSSIBLE DAMAGE

- 1** Damaged coating
- 2** Leaking transitions
- 3** Defective joints
- 4** Washouts
- 5** Cracks
- 6** Misalignment of building components
- 7** Defects in the building components/excavations
- 8** Water ingress into the building component

NEW CONSTRUCTION

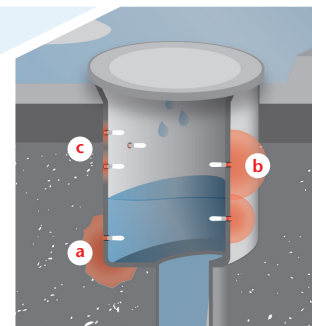
- a** Installation of swelling tapes
- b** Installation of injection tube systems
- c** Bonding concrete to concrete



WEBAC Putties, Injection Tubes, Polymer/Bentonite Swelling Tape

BACKFILLING

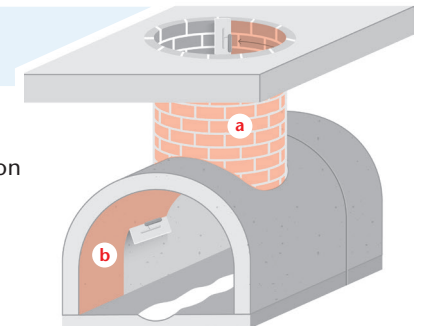
- a** Filling of cavities
- b** Curtain injection between the adjacent soil and the structural element
- c** Injection for stabilization and consolidation



WEBAC Injection Resins, Acrylate Gels

REPROFILING/ PROTECTION

- a** Application of surface protection systems
- b** Reprofilling of sewer and shaft surfaces



WEBAC Primers/Coatings, Putties